

# HTD-72H Series

## Hydraulic Top of Dock Leveler

**Hydraulic: 1 hp. Motor**

25,000 lb.  
Dynamic Capacity

72" Deck Width  
102" Overall Width

### **Rugged Economical Hydraulics for Every Jobsite.**

Pioneer's HTD-72H Series Leveler offers the quality and convenience of hydraulics at a competitive price. Solid-state technology provides easy activation and recycling of deck and lip cylinders. Fully automatic return feature lowers the HTD-72H back into the stored position immediately upon truck departure. HTD-72H Series Levelers provide an operating range of 10" above and 4" below dock, with a minimum lip projection of 12 3/4" and an overall span of 27 3/4". Deck and lip are constructed of 55,000 lb. minimum yield steel tread plate. Grease fittings on continuous lip hinge are standard with each unit. Simple two-cylinder design provides quiet, dependable operation.

### **Warranty**

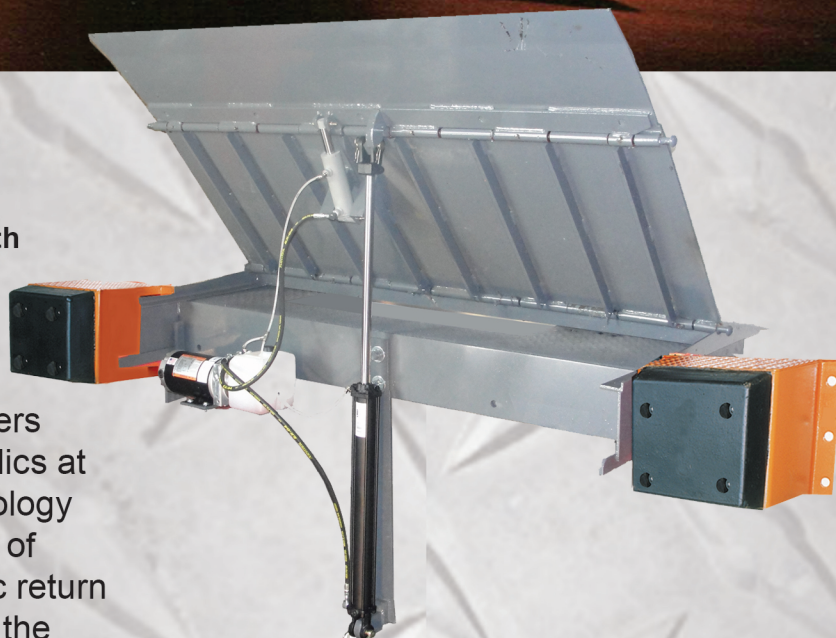
PIONEER provides a 2-year warranty on structural members. A 1-year warranty is provided on motor pump and miscellaneous parts (including materials, labor, and freight).

### **Guarantee**

PIONEER will provide our standard warranty or match any documented competitive warranty in the industry for comparable models. There is no fine print. *We build it and we guarantee it!*



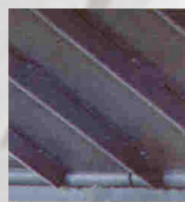
*Rugged. Dependable. PIONEER.*



The HTD Series Leveler recycles while the truck is at the dock **with just the twist of a switch** - or automatically upon truck departure!



HTD Series' hydraulic system features dual **Deck and Lip Cylinders** - providing smooth, quiet, dependable operation.



Pioneer's exclusive design provides **Steel Deck Runners** for matchless structural support.

**Quality Dock Levelers**

**Long Lasting**

**Easy to Install and Operate**

**Safe**



# HTD-72H Series

## Features & Specifications

All PIONEER Levelers meet or exceed the performance requirements of CS202-56., O.S.H.A., and A.N.S.I. MH14.1 - 1984

### Durability

- Deck and lip are constructed of **55,000 lb. Minimum Yield Steel Tread Plate**.
- Formed, plate steel **Bump Blocks** and molded cord **Rubber Bumpers** protect dock face and Leveler from truck damage.
- **Continuous Hinge Design** with **Grease Fittings** included as standard with each unit.

### Easy Installation

- **Steel Rivets** located at either end of the centerplate hinge provide easy, forklift installation.
- **Bolt on Application** allows unit to be installed without welding or expensive concrete work.
- The HTD Series Leveler is furnished with a **1 hp. Motor** (115 volt, single phase, standard. Additional voltages available) stored underneath the unit; 1 ph. motor is standard (3ph. is also available).

### Simple Operation

- Easy, **Rotary-switch Activation** and **Automatic Recycling** allows one-man operation.
- Leveler raises and lip extends smoothly onto truck bed hydraulically.
- Unit is easily recycled with truck in position and automatically returns to stored position upon truck departure.
- **Extended Service Range** of 10" above and 4" below makes Top-of-Dock Levelers ideal for docks built below today's standards, or when snow build-up at the dock is a problem.
- **Note:** As with all electrical equipment, this unit should not be immersed or submerged. Contact Pioneer for alternative solutions.

### Safety

- Unit is **Completely Automatic** - NO LIFTING, PULLING, OR STRAINING REQUIRED!
- Power unit is totally enclosed, factory wired, and tested per specifications. All 60HZ units. Remote box meets N.E.M.A. 4X (and/or N.E.M.A. 12) requirements.
- Standard **Breather Cap** for graduated air filtration.
- S.A.E. **Straight Thread Porting**, along with cartridge design valving integrated into a **Single Valve Manifold**, significantly reduces the possibility of hydraulic leakage.



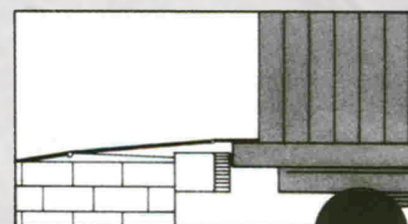
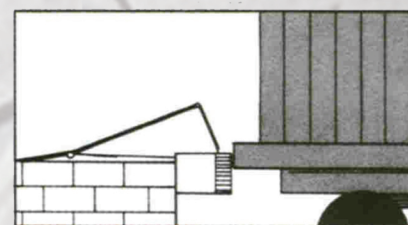
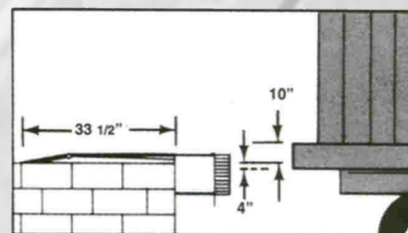
*Rugged. Dependable. PIONEER.*

P.O. Box • Spring Hill, Tennessee 37174  
Phone: 931.486.2296 • Fax: 931.486.0316  
[www.pioneerleveler.com](http://www.pioneerleveler.com)

PIONEER offers a complete line of finely crafted, technologically advanced loading dock equipment, including **Hydraulic, Air Operated and Mechanical Pit Levelers, Edge-of-Dock and Hydraulic Top of Dock Levelers, Portable Dock boards, Vehicle Restraints, Dock Seals & Shelters, High Speed Fabric Roll-Up Doors, HVLS Fans**, and other quality accessories. Just call us toll free for personal, professional customer assistance and responses to all of your product needs.

toll free  
**1.800.251.3382**

### Operating Diagram



### Dealer Locations

PIONEER Dock Equipment is available nationwide. For the location of your nearest PIONEER Dealer call us toll free at **1.800.251.3382**.